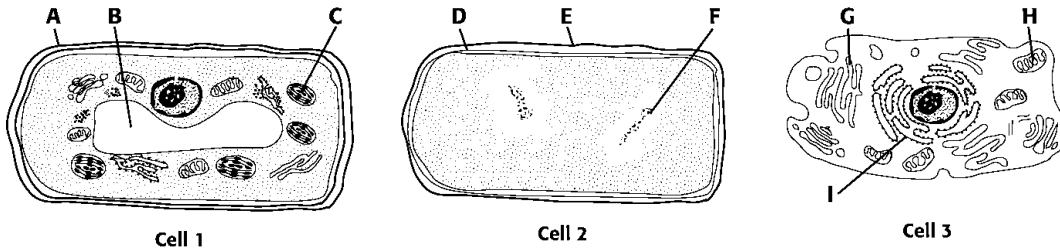


Skills Worksheet

# Science Skills

## INTERPRETING GRAPHICS

Biology students were working on a class project. They prepared copies of transmission electron micrographs of a bacterium, a plant cell, and an animal cell for display in their classroom. Unfortunately, the pictures were not labeled and got mixed up. Help these students correctly identify the cells and cell structures. Use the figures below to answer questions 1–5.



In the space provided, write the names of each cell's labeled structures (A–I). Using this information, write the identity of each cell—bacterium, plant cell, or animal cell.

1. Cell 1 identity \_\_\_\_\_

A. \_\_\_\_\_

B. \_\_\_\_\_

C. \_\_\_\_\_

2. Cell 2 identity \_\_\_\_\_

D. \_\_\_\_\_

E. \_\_\_\_\_

F. \_\_\_\_\_

3. Cell 3 identity \_\_\_\_\_

G. \_\_\_\_\_

H. \_\_\_\_\_

I. \_\_\_\_\_

Science Skills *continued*

---

**Read each question, and write your answer in the space provided.**

4. Identify each cell as prokaryotic or eukaryotic.

---

---

---

5. What are the primary differences between the three cells? What characteristics do they share?

---

---

---

---

---

---

---

---

---

---

---

---