

Assessment

# Chapter Test

---

## Cell Structure

In the space provided, write *T* if the statement is true or *F* if it is false.

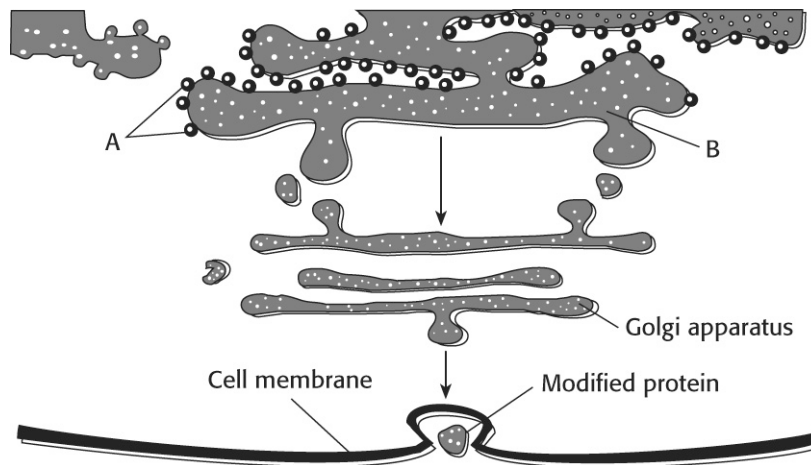
- \_\_\_\_\_ 1. Microscopes needed to be used to discover cells.
- \_\_\_\_\_ 2. All living things are made up of one or more cells.
- \_\_\_\_\_ 3. A large cell can move materials into and out of the cell faster than a smaller cell can.
- \_\_\_\_\_ 4. Proteins are made by ribosomes on smooth endoplasmic reticulum.
- \_\_\_\_\_ 5. In plants, chloroplasts use light energy to make sugars.

Circle the term that best completes each sentence.

- 6. An example of a prokaryotic cell is a (bacterium, vesicle, or chloroplast).
- 7. The interior of a cell is called the (cilia, organelle, or cytoplasm).
- 8. The web of protein fibers that help organize the parts of a eukaryotic cell make up the (cilia, cytoskeleton, or nucleus).
- 9. Instructions for making proteins are stored in (DNA, mitochondria, or cell membranes).
- 10. Enzymes that can digest food are found in vesicles called (ribosomes, mitochondria, or lysosomes).

Chapter Test *continued*

Questions 11 and 12 refer to the following figure, which shows the packaging and distribution of proteins inside the cell. Circle the correct term for each part of the cell.



11. The structures labeled *A* are (ribosomes or flagella).
12. The structure labeled *B* is the (nucleus or endoplasmic reticulum).

Using the word bank below, fill in each blank provided.

cell membrane	flagella	prokaryote
eukaryote	nucleus	ribosomes

13. The cell's DNA is in the \_\_\_\_\_.
14. Each cell in a(n) \_\_\_\_\_ has a nucleus.
15. The structure that sticks out from the cell's surface and allows it to move is a(n) \_\_\_\_\_.
16. A single-celled organism that does not have a nucleus is a(n) \_\_\_\_\_.
17. Proteins are made on the \_\_\_\_\_.
18. The \_\_\_\_\_ controls what enters and leaves a cell.

**Chapter Test *continued***

---

**In the space provided, write the letter of the term that best completes each sentence.**

- \_\_\_\_\_ 19. The groups of cells that have similar structures and functions in a leaf are  
a. tissues.  
b. organs.  
c. organ systems.
- \_\_\_\_\_ 20. The heart and a lung are  
a. tissues.  
b. organs.  
c. organ systems.
- \_\_\_\_\_ 21. An organism made of many cells that are permanently together and coordinate their activities is a  
a. unicellular organism.  
b. colonial organism.  
c. multicellular organism.
- \_\_\_\_\_ 22. Cells are arranged into tissues, organs, and organ systems in a  
a. unicellular organism.  
b. colonial organism.  
c. multicellular organism.